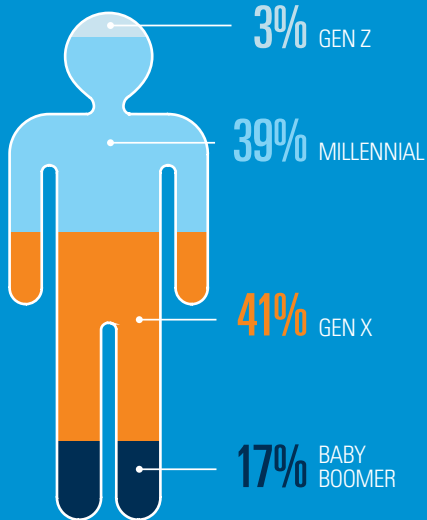


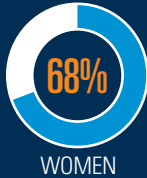
# BCBSNE Workforce Diversity | By the Numbers

At Blue Cross and Blue Shield of Nebraska (BCBSNE), we believe our individual differences make our team stronger. Our reputation for diversity and inclusion is one of the many reasons that we are an employer of choice in Omaha. Take a look at some of our numbers.

## GENERATIONAL SPLIT



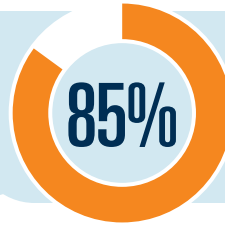
1,175+  
EMPLOYEES



WOMEN



MINORITIES



85% of BCBSNE employees surveyed agree that diversity is valued in our organization.

## LEADERSHIP DIVERSITY

Executive team includes:

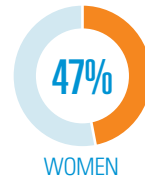


WOMEN



MINORITIES

Senior leadership includes:



WOMEN



MINORITIES



We have six **Employee Resource Groups (ERGs)** that inspire and encourage diversity and inclusion: Young Professionals, African-American, Latino, Veterans, Disabled and LGBTQ+